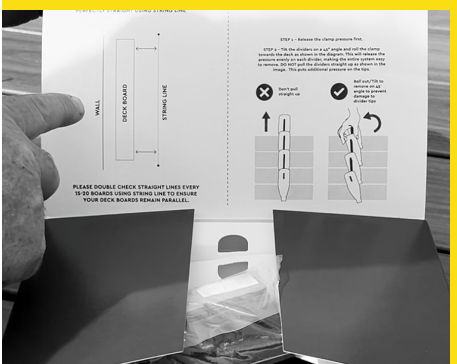


the deck divider

THE ULTIMATE SPACING TOOL

ASSEMBLY INSTRUCTIONS



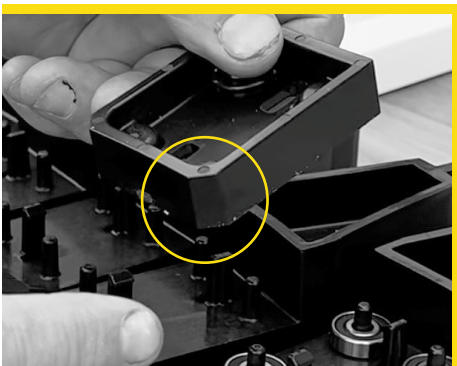
1. Open box – which displays bearing, end clamp and instruction guide. Remove 5 dividers, tube of 20 bearings, and 2 clamp ends.



2. Remove all dividers and lay on flat surface with divider covers.



3. Install the bearings over guide pins as shown. Place your clamp bar in position between bearings.



4. Once bearings have been installed, place cover over divider, ensuring the bottom bevel edge matches up.



5. Lock cover into place by pressing down firmly ensuring the locking device clicks into place.



6. Repeat steps 3-5 for all 5 dividers, assembling them onto the clamp bar.



7. Locate your clamp ends. The clamp ends have location notches. Line up steel notches on the plastic sleeve as shown.



8. Slide clamp ends on as shown.



9. Ready to go.